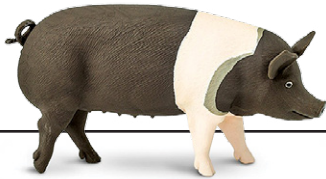


A PUZZLING CONCLUSION

BY KEN WEBER



An Enigmatic Response

When Isadore got home from checking out the stockyards at the new Hamilton and North Western Railway station in Palgrave, his father asked if it was true the yards were built in a rather unusual design. "Sure are!" Izzy told him. "There are four pens set up for pigs, and when I was there today I counted 21 pigs in them, with an odd number in each pen. Can you imagine that?"

Can you?

Adding Suits

The four playing card suits in this matrix each represent four different numerals between 1 and 10. The sums at the right of each row and at the base of each column are the result of adding the numerical suit values.

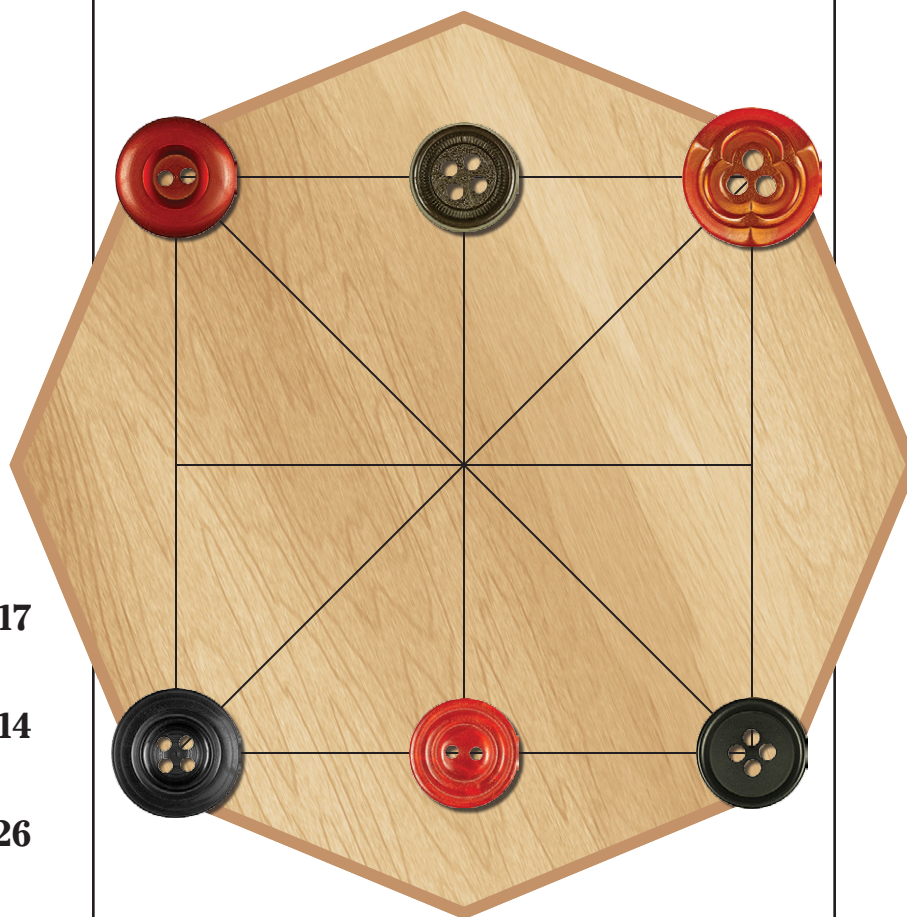
What is the sum of the column on the right?

	+		+		+		17
+		+		+		+	
	+		+		+		14
+		+		+		+	
	+		+		+		26
+		+		+		+	
	+		+		+		27
+		+		+		+	
21	14	29	?				

If Your Holiday Dinner is Late...

(a game for two players)

On the grid, place six small items (coins or other) of two different types in the starting position shown below. Two players take turns moving any one of their three items from one intersection to the next. Only one item at a time may occupy an intersection and each move must follow the lines. There is no jumping. The winner is the first player to get their three items in a straight line.



Miss Lang has a Hit!

At S.S. #6 East Luther, Miss Lang's students really enjoyed her rainy-day word game (see 'A Puzzling Conclusion' in our autumn issue) and asked for more such games, so this is what she presented on the next rainy day.

For the juniors

Choose any **one** letter from the alphabet and add it to each of the four-letter words below to create new words.

tire nail core lane rile

Do this by rearranging each four-letter word plus your one-letter choice into a word with that choice in the *middle* position. For example, if 'g' or 'f' were your choice, then the first word 'tire' could be rearranged into 'tiger' or 'refit'. But 'g' and 'f' don't work for the other words. You must choose one letter that works for **all** of them.

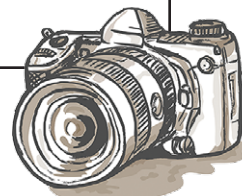
For the seniors

Choose a **consonant blend** and add it to each four-letter word below so that what is now six letters can be rearranged into a new word with your choice of consonants in the *middle* position.

reef blue lace alas bait

For example if 'st' or 'nc' were blends to be added to the words in the list, then 'reef' could be rearranged into 'fester' or 'fencer,' but those blends don't work for the other words, so you must choose a blend that works for **all** of them.

Holly Needs Help



Holly was having a banner year attracting new clients, which might explain why she instinctively made mental notes on the four people she met in the kitchen at her neighbour's Christmas party. She noted, for example, that one of the four was a photographer, another was a singer, a third sold cars, and the fourth person was a banker. Within a few minutes of introducing herself to Mr. Creemore and Ms. Hockley (the other two were Mr. Caledon and Mr. Erin), she felt she might have met more potential new clients.

However, the next day Holly couldn't remember which person did what for a living, and although her neighbour was reluctant to reveal private information, he consented to give her these clues.

Use the clues to help Holly determine who does what.

In the previous summer, Mr. Caledon had approached the banker for a loan.

Ms. Hockley is planning to engage the photographer's services for her wedding.

The singer and Mr. Caledon are pals and avoid ever doing business together.

Neither Mr. Erin nor the singer had met Mr. Creemore until that Christmas party.